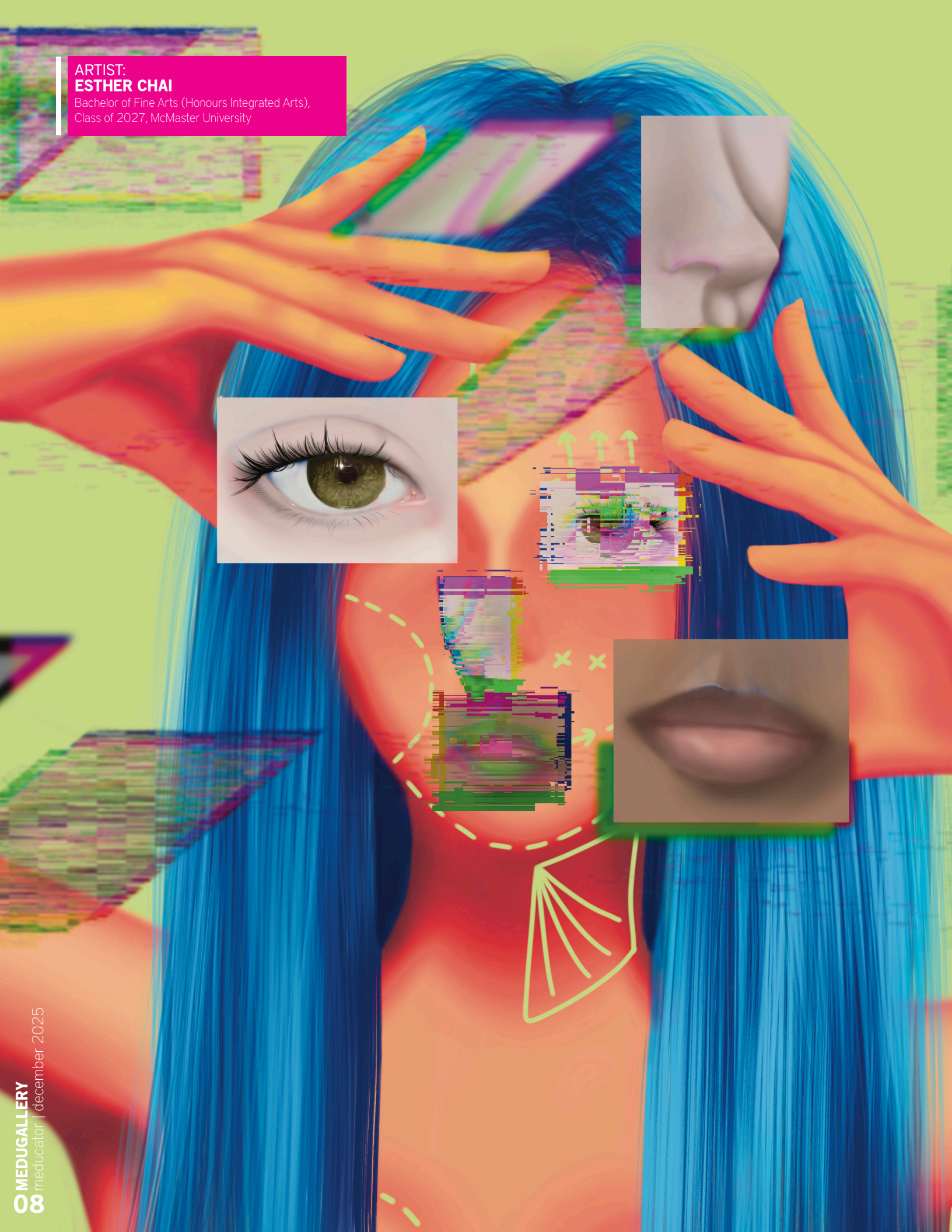


ARTIST:
ESTHER CHAI

Bachelor of Fine Arts (Honours Integrated Arts),
Class of 2027, McMaster University



"CTRL + ALT + ME"

This piece explores the psychological impact of modern beauty standards and the growing desire to undergo cosmetic enhancement. The figure's unnatural skin tone and hair colour portray a synthetic quality, despite its distinctly human appearance. This disconnect is further emphasized through facial features floating unattached from the figure itself. These contrasting elements depict the impossibility of achieving "perfection"; the ideal is always outside the body and never fully attainable. The pursuit of these aesthetic ideals has real-world implications in health and medicine by influencing how people think about their bodies and how they engage with cosmetic care.

